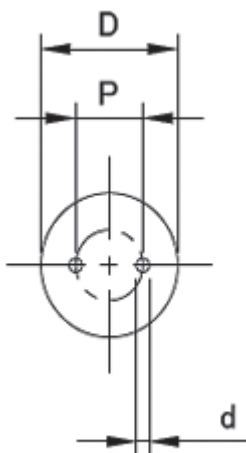


* Make-to-order products using grades and sizes other than those on the stock list are also available. Please consult us for details.

2-hole, total length 405L (mm)		
Helix angle	Outside diameter (D)	Hole diameter-pitch (d-P)
10°	6	φ0.60-1.80
10°	8	φ0.90-2.80
10°	10	φ0.90-2.80
10°	12	φ1.20-3.50

2-hole, total length 405L (mm)		
Helix angle	Outside diameter (D)	Hole diameter-pitch (d-P)
20°	4	φ0.60-1.80
20°	5	φ0.70-2.10
20°	6	φ0.70-2.60
20°	7	φ1.00-3.30
20°	8	φ1.00-4.00
20°	10	φ1.40-4.80
20°	12	φ1.40-6.25
20°	14	φ1.75-7.10
20°	16	φ1.75-8.30
20°	18	φ2.00-9.55
20°	20	φ2.00-10.40

2-hole, total length 405L (mm)		
Helix angle	Outside diameter (D)	Hole diameter-pitch (d-P)
40°	6	φ0.40-1.70
40°	6	φ0.50-2.20
40°	8	φ0.65-2.70
40°	10	φ0.80-3.50
40°	12	φ0.90-4.20



2-hole, total length 405L (mm)		
Helix angle	Outside diameter (D)	Hole diameter-pitch (d-P)
30°	3	φ0.30-1.00
30°	3	φ0.30-1.40
30°	3	φ0.40-1.70
30°	4	φ0.40-1.75
30°	4	φ0.60-2.20
30°	5	φ0.55-2.30
30°	5	φ0.70-2.60
30°	6	φ0.70-2.60
30°	6	φ0.80-3.40
30°	7	φ0.80-2.20
30°	7	φ0.80-3.40
30°	7	φ1.00-3.70
30°	8	φ1.00-2.70
30°	8	φ1.00-4.00
30°	9	φ1.00-3.00
30°	9	φ1.00-4.00
30°	9	φ1.40-4.80
30°	10	φ1.00-3.20
30°	10	φ1.40-4.80
30°	11	φ0.80-3.00
30°	11	φ1.00-3.40
30°	11	φ1.00-4.70
30°	11	φ1.40-5.30
30°	12	φ1.40-4.30
30°	12	φ1.40-6.25
30°	13	φ1.40-4.30
30°	13	φ1.75-6.50
30°	14	φ1.40-4.80
30°	14	φ1.75-7.10
30°	15	φ1.75-7.70
30°	16	φ1.20-3.70
30°	16	φ1.40-5.30
30°	16	φ1.75-8.30
30°	17	φ1.75-8.90
30°	18	φ1.40-6.25
30°	18	φ2.00-9.55
30°	19	φ2.00-10.10
30°	20	φ1.75-7.10
30°	20	φ2.00-10.40

3-hole, total length 405L (mm)		
Helix angle	Outside diameter (D)	Hole diameter-pitch (d-P)
30°	3	φ0.35-1.60
30°	4	φ0.35-1.95
30°	4	φ0.40-2.30
30°	5	φ0.40-2.90
30°	6	φ0.50-3.20
30°	7	φ0.65-4.30
30°	8	φ0.70-4.00
30°	8	φ0.70-4.30
30°	9	φ0.85-5.10
30°	10	φ0.85-5.10
30°	11	φ1.10-5.70
30°	12	φ1.10-6.30
30°	13	φ1.20-6.80
30°	14	φ1.40-7.30
30°	15	φ1.40-7.80
30°	16	φ1.60-8.30
30°	17	φ1.60-8.60
30°	18	φ1.70-9.50
30°	19	φ1.70-10.20
30°	20	φ1.90-10.20

3-hole, total length 405L (mm)		
Helix angle	Outside diameter (D)	Hole diameter-pitch (d-P)
40°	6	φ0.50-2.50
40°	8	φ0.50-3.35

